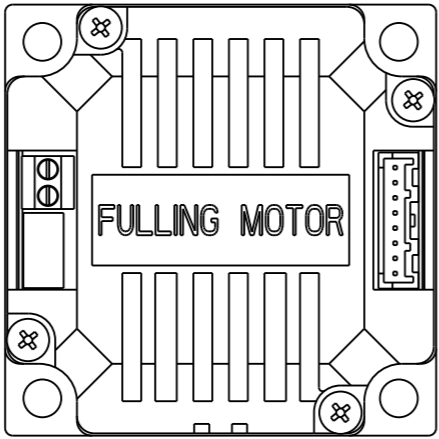
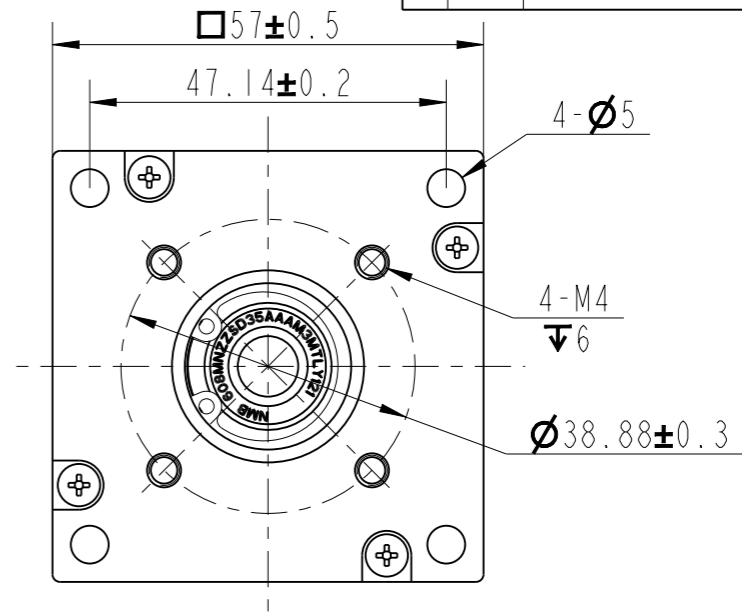
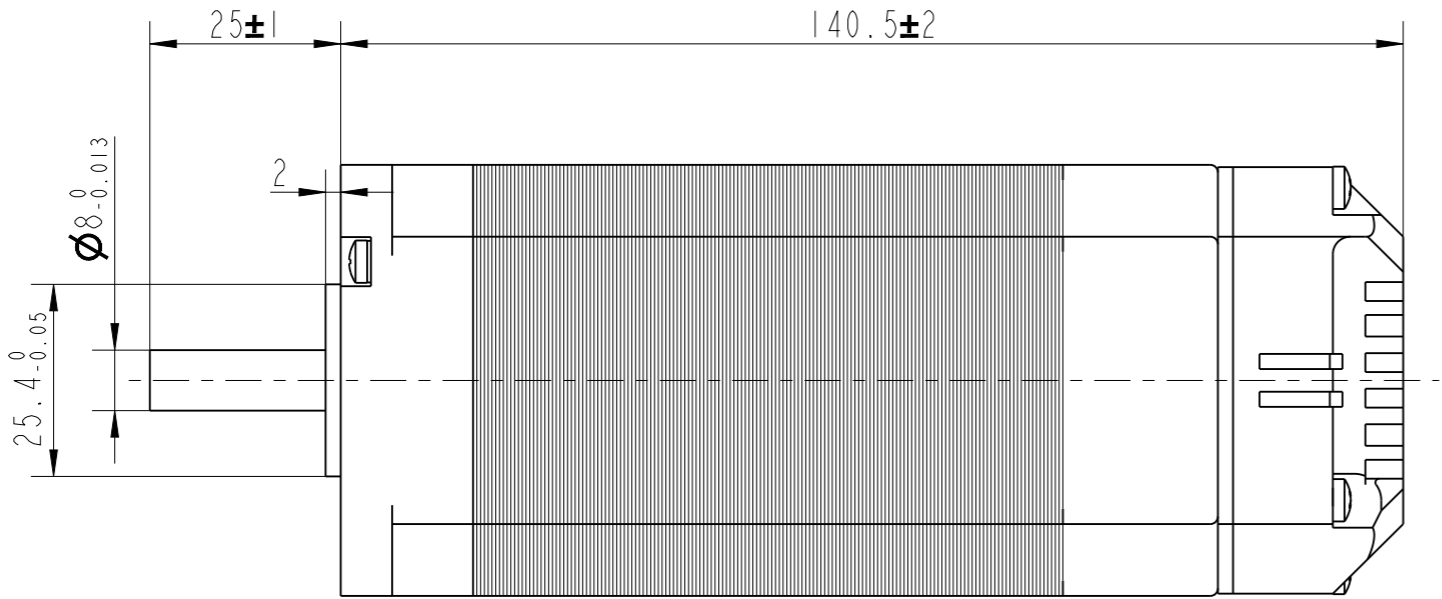


REV	ECN	NO	DESCRIPTION	DRN	APP'D	DATE
B	240423	WJN01	修改: 增加EB571-752J.1.2.16.000887及EB571-950.1.2.16.001227	吴季楠		240423



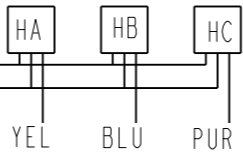
技术要求

- 后轴承外钢圈与后端盖轴承室涂胶水固定
后轴承内钢圈与转轴涂胶水固定
- 需烧录程序

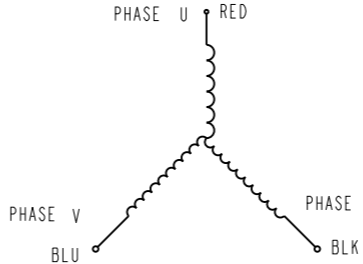
NUMBER OF PHASE	绕组相数	3	Wires for Phases UL1430 AWG18			
NUMBER OF POLES	极数	8	PHASE U	PHASE V	PHASE W	
LINE TO LINE RESISTANCE	线电阻	0.2±10% ohms@20°C	RED	BLU	BLK	
LINE TO LINE INDUCTANCE	线电感	0.24±20% mH@1kHz	Wires for Hall UL3265 AWG28			
NOMINAL VOLTAGE	额定电压	24 VDC	HALL Vc	Hu	Hv	Hw
NO LOAD SPEED	空载转速	4000±10% RPM	RED	YEL	BLU	PUR
NO LOAD CURRENT	空载电流	1 A				
RATED TORQUE	额定转矩	0.6 N.m	PERMISSIBLE RADIAL+AXIAL FORCE			
RATED SPEED	额定转速	3000±10% RPM				
RATED CURRENT	额定电流	10 A				
PEAK TORQUE	峰值扭矩	1.8 N.m				
PEAK CURRENT	峰值电流	30 A				
BACK EMF CONSTANT	反电势常数	4.6 Vrms/kRPM				
TORQUE CONSTANT	转矩常数	0.06 N.m/A				
INSULATION CLASS	绝缘等级	B 130°C				
DIELECTRIC STRENG	介电强度	600VAC ISEC				
INSULATION RESIST	绝缘电阻	100MOhm @500VDC				
ROTOR INERTIA	转子转动惯量	430g.cm ²	AXIAL-FORCE	轴向压力	Fa=45 N Max	
WEIGHT	重量	1.6Kg	DISTANCE	距离	a=20 mm	
OPERATION AMBIENT	使用环境	Ambient temperature:-20...+50°C,humidity Max.85%(No condensation)				
STORAGE AMBIENT	存储环境	Ambient temperature:-20...+85°C,humidity Max.85%(No condensation)				

HALL +5V RED
HALL GND BLK

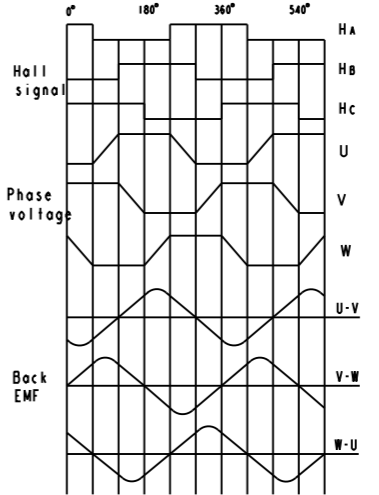
HALL CONNECTING



THREE-PHASE CONNECTING
STAR CONNECTION



CW from shaft side



B			DESIGN	DATE	P/N.	3.1.02.057.3935
REV	ECN NO.	DESCRIPTION			TITLE	Specifications
UNLESS OTHERWISE SPECIFIED TOLERANCES: DECIMALS: .X ±0.5 .XX ±0.25 .XXX ±0.1 UNIT: mm DO NOT SCALE DRAWING		MATERIAL	WEIGHT	CHECK	USED ON	iBLD57NC-138-H-S-VI.1-003
			SHEET	STANDARDIZATION	DWG NO.	REV B
		FIRST ANGLE PROJECTION	SCALE	APPD	FULLING MOTOR	
			1:2			