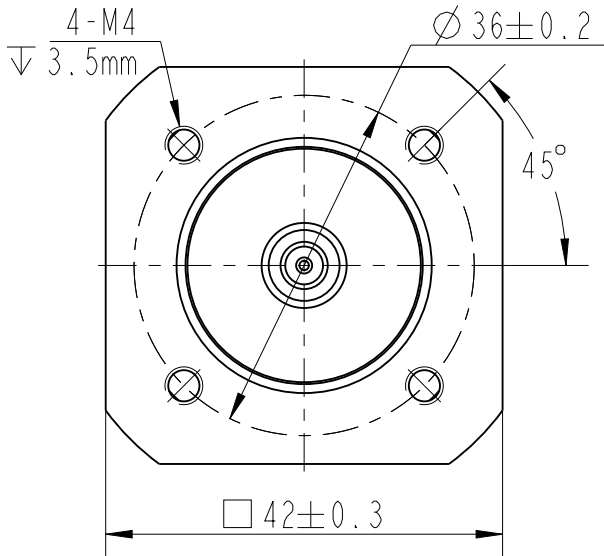
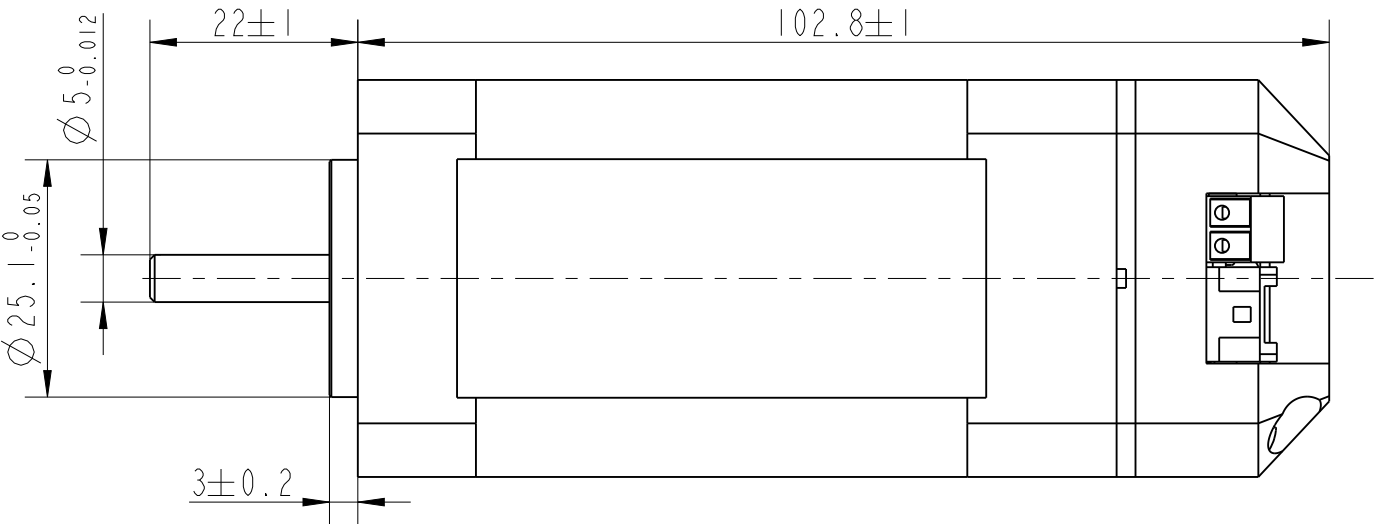
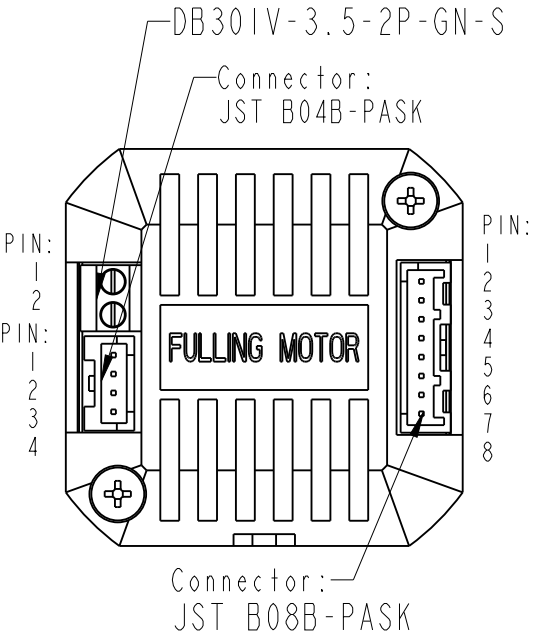


REV	ECN	NO	DESCRIPTION	DRN	APP'D	DATE

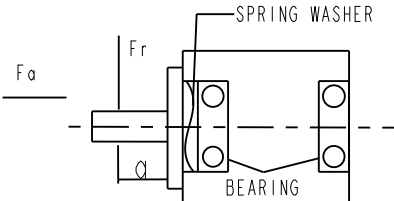


DB301V-3.5-2P-GN-S	
PIN	Description
1	VIN
2	GND

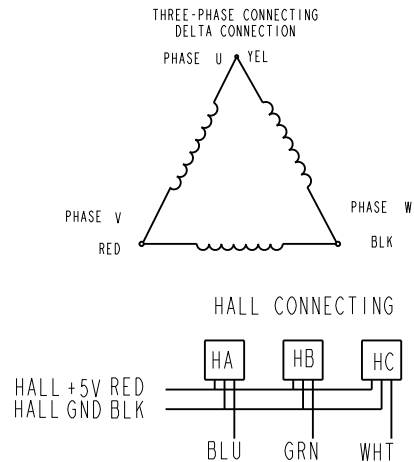
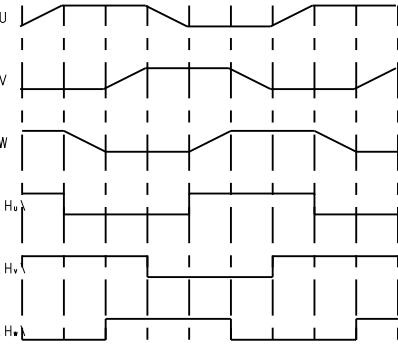
JST B04B-PASK	
PIN	Description
1	485_A
2	485_B
3	485_A
4	485_B


JST B08B-PASK	
PIN	Description
1	X0
2	X1
3	X2
4	X3
5	XCOM
6	Y0
7	Y1
8	YCOM

NUMBER OF PHASE	绕组相数	3
NUMBER OF POLES	极数	8
LINE TO LINE RESISTANCE	线电阻	0.43±10% ohms@20°C
LINE TO LINE INDUCTANCE	线电感	0.71±20% mH@1kHz
NOMINAL VOLTAGE	额定电压	24 VDC
NO LOAD SPEED	空载转速	6100±10% RPM
NO LOAD CURRENT	空载电流	0.5 A
RATED TORQUE	额定转矩	0.185 N.m
RATED SPEED	额定转速	4000 RPM
RATED CURRENT	额定电流	5 A
PEAK TORQUE	峰值转矩	0.56 N.m
PEAK CURRENT	峰值电流	15 A
BACK EMF CONSTANT	反电势常数	2.74±10% Vrms/kRPM
TORQUE CONSTANT	转矩常数	0.038 N.m/A
INSULATION CLASS	绝缘等级	B 130°C
DIELECTRIC STRENG	介电强度	650VAC ISEC
INSULATION RESIST	绝缘电阻	100MOhm @500VDC
ROTOR INERTIA	转子转动惯量	72 g.cm ²
WEIGHT	重量	0.67 Kg
OPERATION AMBIENT	使用环境	Ambient temperature:-20...+50°C,humidity Max.85%(No condensation)
STORAGE AMBIENT	存储环境	Ambient temperature:-20...+85°C,humidity Max.85%(No condensation)

装驱动器前自家测试接线				
Wires for Phases UL1430 AWG20				
PHASE U		PHASE V		PHASE W
YEL		RED		BLK
Wires for Hall UL3265 AWG28				
HALL Vcc	Hu	Hv	Hw	HALL Gnd
RED	BLU	GRN	WHT	BLK
PERMISSIBLE RADIAL+AXIAL FORCE				
				
AXIAL-FORCE		轴向压力	Fa=10 N Max	
DISTANCE		距离	a=20 mm	
RADIAL-FORCE		径向压力	Fr=28 N Max	
SHAFT RADIAL PLAY		径向间隙	0.02mm Max.@4.5N	
SHAFT AXIAL PLAY		轴向间隙	0.08mm Max.@4.5N	
-20...+50°C, humidity Max.85%(No condensation)				
-20...+85°C, humidity Max.85%(No condensation)				

CCW COMMUTATION
VIEWED FROM OUTPUT SHAFT



A			DESIGN	DATE	P/N.	***	
REV	ECN NO.	DESCRIPTION		HX	241015	TITLE	Specifications
UNLESS OTHERWISE SPECIFIED TOLERANCES: DECIMALS: .X ±0.5 .XX ±0.25 .XXX ±0.1 UNIT: mm DO NOT SCALE DRAWING		MATERIAL	WEIGHT	CHECK		USED ON	iBLD42NR-80-H-T
			SHEET	STANDARDIZATION		DWG NO.	REV A
		FIRST ANGLE PROJECTION		SCALE	APPD	FULLING MOTOR	
				1:1			