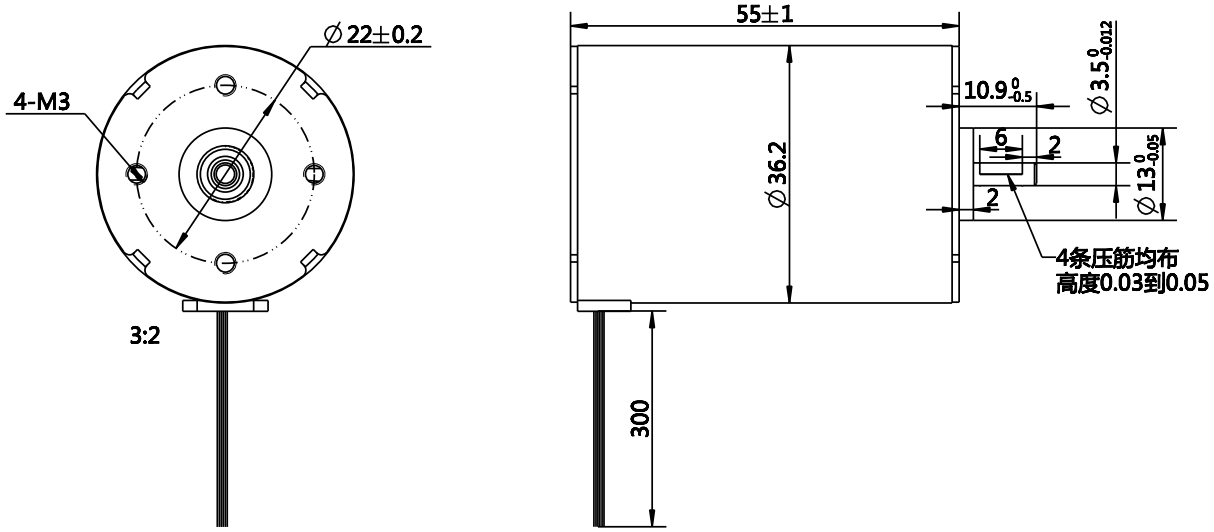


REV	ECN	NO	DESCRIPTION	DRN	APP'D	DATE



NUMBER OF PHASE 绕组相数	3	Wires for Phases UL1430 AWG22								
NUMBER OF POLES 极数	8	PHASE U	PHASE V	PHASE W						
LINE TO LINE RESISTANCE 线电阻	1.6±10% ohms@20° C	YEL	RED	BLK						
LINE TO LINE INDUCTANCE 线电感	1.78±20% mH@1kHz	Wires for Hall UL1430 AWG26								
NOMINAL VOLTAGE 额定电压	24 VDC	HALLVc	Hu	Hv	Hw	HALLGnd				
NO LOAD SPEED 空载转速	5650±10% RPM	RED	BLU	GRN	WHT	BLK				
NO LOAD CURRENT 空载电流	A	PERMISSIBLE RADIAL*AXIAL FORCE								
RATED TORQUE 额定转矩	50 mN.m									
RATED SPEED 额定转速	4500±10% RPM									
RATED CURRENT 额定电流	1.42 A									
PEAK TORQUE 峰值转矩	150 mN.m									
PEAK CURRENT 峰值电流	4.5 A									
BACK EMF CONSTANT 反电势常数	2.8 Vrms/kRPM									
TORQUE CONSTANT 转矩常数	35 mN.m/A									
INSULATION CLASS 绝缘等级	B 130° C						AXIAL-FORCE 轴向压力	Fa=10 N Max		
DIELECTRIC STRENG 介电强度	1000VAC 1SEC						DISTANCE 距离	a=10 mm		
INSULATION RESIST 绝缘电阻	100MOhm @500VDC	RADIAL-FORCE 径向压力	Fr=28 N Max							
ROTOR INERTIA 转子转动惯量	g.cm <sup>2</sup>	SHAFT RADIAL PLAY 径向间隙	0.02mm Max.@4N							
WEIGHT 重量	Kg	SHAFT AXIAL PLAY 轴向间隙	0.14mm Max.@4N							
OPERATION AMBIENT 使用环境	Ambient temperature:-25...+40° C, humidity Max.85%(No condensation)									
STORAGE AMBIENT 存储环境	Ambient temperature:-10...+35° C, humidity Max.85%(No condensation)									

A				DESIGN	DATE	P/N.	3.1.02.036.0016
REV	ECN NO.	DESCRIPTION		CHECK		TITLE	FL36RBL557
UNLESS OTHERWISE SPECIFIED		MATERIAL	CONTR.			USED ON	FL36RBL557-24V-4524A
TOLERANCES:						DWG NO.	REV A
DECIMALS: .X ±0.5							
ANGULAR: .XX ±0.25							
.XXX ±0.1							
UNIT: mm		FIRST ANGLE PROJECTION		SCALE 1:1		FULLING MOTOR	
DO NOT SCALE DRAWING				SHEET 1 OF 1			