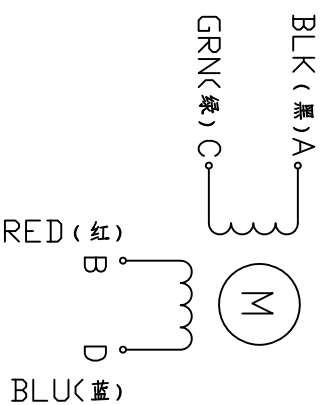


REV	ECN NO.	DESCRIPTION	DRN	APP'D	DATE

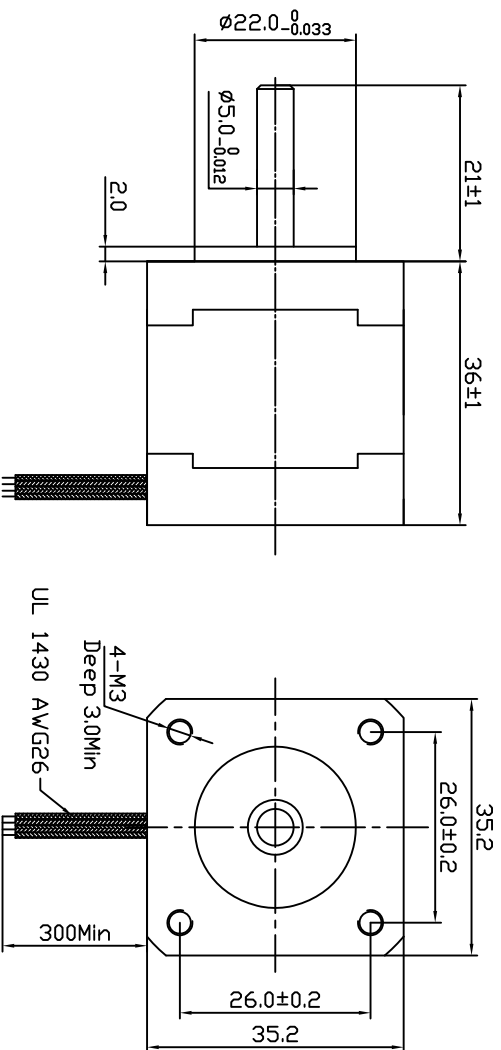
Wiring Diagram (接线图)



Exciting Sequence (励磁顺序)

CW DIRECTION	STEP	A	C	B	D
↑	1	+		+	
	2		+	+	
	3			+	+
	4	+			+

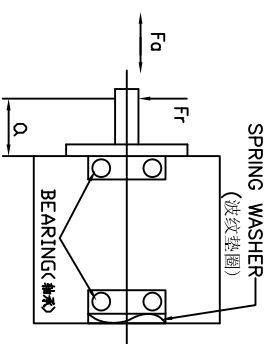
CW, see from flange side
< 顺时针, 从法兰侧看 >



SPECIFICATION

STEP ANGLE	步距角	1.8°/full step(步距角精度 ±5%)
STEP ANGLE ACCURACY	步距角精度	
NUMBER OF PHASE	绕组相数	2
RATED VOLTAGE	额定电压	2.7 VDC
RATED CURRENT	额定电流	1.0 A
RESISTANCE/PHASE	每相电阻	2.7±10% ohms@20°C
INDUCTANCE/PHASE	每相电感	4.3±20% mH@1kHz
HOLDING TORQUE	保持转矩	1400 g.cm
PULL OUT TORQUE	运行转矩	N.cm @ RPM
BACK EMF	反电动势	V @ 300RPM
DETON TORQUE	定位转矩	N.cm
ROTOR INERTIA	转子转动惯量	14 g.cm²
WEIGHT	重量	180 g
TEMPERATURE RISE	温升	Less than 80K (< 80°C)
SOURCE VOLTAGE	驱动器电压	24 VDC
INSULATION CLASS	绝缘等级	B 130°C
DIELECTRIC STRENGTH	介电强度	500VAC 1MIN
INSULATION RESISTANCE	绝缘电阻	100MΩ @ 500VDC
IP CODE	防护等级	IP30
OPERATION AMBIENT	使用环境	Ambient temperature: -20...+50°C, humidity Max. 85% (No condensation)
STORAGE AMBIENT	存储环境	Ambient temperature: -20...+85°C, humidity Max. 85% (No condensation)

PERMISSIBLE RADIAL+AXIAL FORCE (允許的軸向和徑向力)



PN号	名称	数量	单位	备注	PN号	名称	数量	单位	备注
					DESIGN				
					CHECK				
					APPD				
					SCALE				
					SHEET				
					NTS				
					OF				
					PULLING MOTOR				