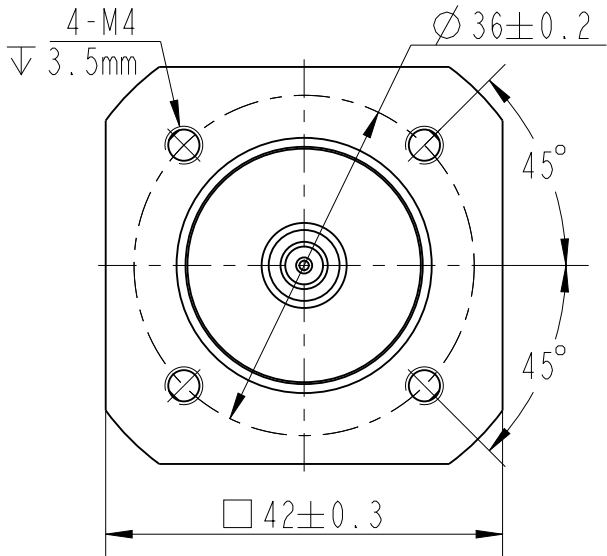
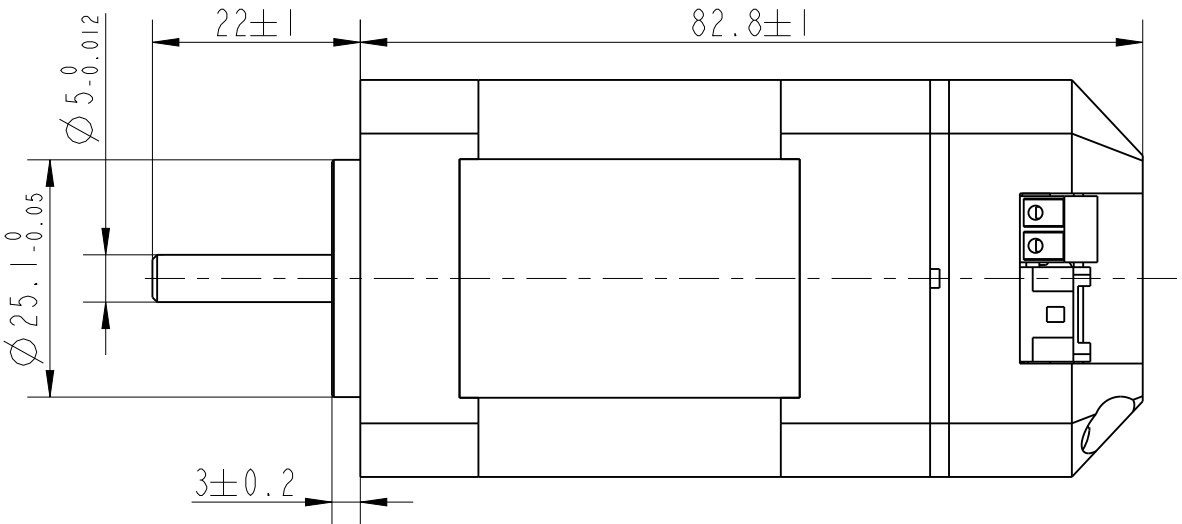
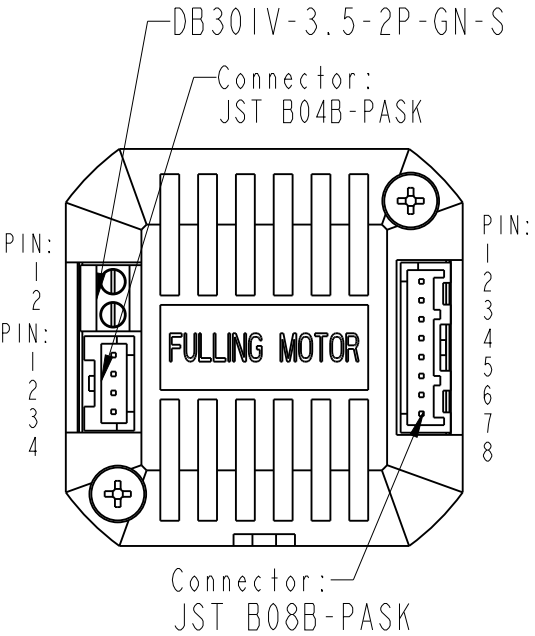


REV	ECN	NO	DESCRIPTION	DRN	APP'D	DATE

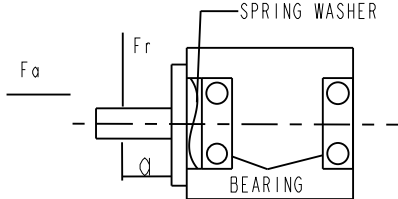


DB301V-3.5-2P-GN-S	
PIN	Description
1	VIN
2	GND

JST B04B-PASK	
PIN	Description
1	485_A
2	485_B
3	485_A
4	485_B

JST B08B-PASK	
PIN	Description
1	X0
2	X1
3	X2
4	X3
5	XCOM
6	Y0
7	Y1
8	YCOM

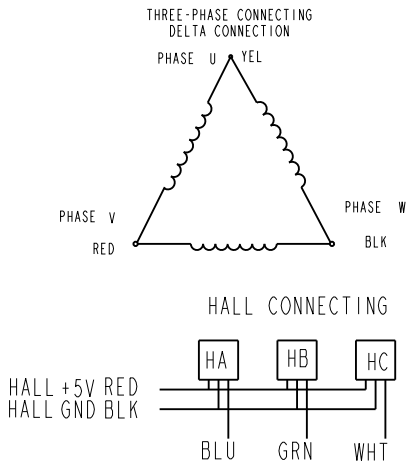
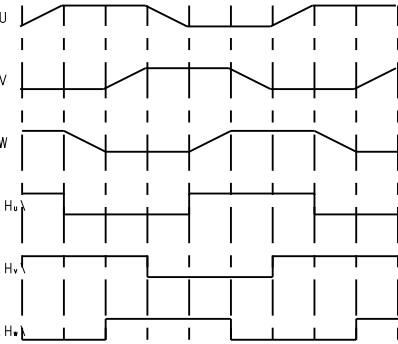
NUMBER OF PHASE	绕组相数	3
NUMBER OF POLES	极数	8
LINE TO LINE RESISTANCE	线电阻	$0.8 \pm 10\%$ ohms@20°C
LINE TO LINE INDUCTANCE	线电感	$1.2 \pm 20\%$ mH@1kHz
NOMINAL VOLTAGE	额定电压	24 VDC
NO LOAD SPEED	空载转速	$6000 \pm 10\%$ RPM
NO LOAD CURRENT	空载电流	0.5 A
RATED TORQUE	额定转矩	0.125 N.m
RATED SPEED	额定转速	4000 RPM
RATED CURRENT	额定电流	3.5 A
PEAK TORQUE	峰值转矩	0.38 N.m
PEAK CURRENT	峰值电流	10.5 A
BACK EMF CONSTANT	反电势常数	$2.71 \pm 10\%$ Vrms/kRPM
TORQUE CONSTANT	转矩常数	0.0355 N.m/A

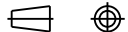
装驱动器前自家测试接线				
Wires for Phases UL1430 AWG20				
PHASE U	PHASE V	PHASE W		
YEL	RED	BLK		
Wires for Hall UL3265 AWG28				
HALL Vcc	Hu	Hv	Hw	HALL Gnd
RED	BLU	GRN	WHT	BLK
PERMISSIBLE RADIAL+AXIAL FORCE				
				

INSULATION CLASS	绝缘等级	B 130°C
DIELECTRIC STRENG	介电强度	650VAC ISEC
INSULATION RESIST	绝缘电阻	100MOhm @500VDC
ROTOR INERTIA	转子转动惯量	48 g.cm ²
WEIGHT	重量	0.47 Kg
OPERATION AMBIENT	使用环境	Ambient temperature:-20...+50°C,humidity Max.85%(No condensation)
STORAGE AMBIENT	存储环境	Ambient temperature:-20...+85°C,humidity Max.85%(No condensation)

AXIAL-FORCE	轴向压力	Fa=10 N Max
DISTANCE	距离	a=20 mm
RADIAL-FORCE	径向压力	Fr=28 N Max
SHAFT RADIAL PLAY	径向间隙	0.02mm Max.@4.5N
SHAFT AXIAL PLAY	轴向间隙	0.08mm Max.@4.5N

CCW COMMUTATION
VIEWED FROM OUTPUT SHAFT



A			DESIGN	DATE	P/N.	***	
REV	ECN NO.	DESCRIPTION	HX	241015	TITLE	Specifications	
UNLESS OTHERWISE SPECIFIED TOLERANCES: DECIMALS: .X ±0.5 .XX ±0.25 .XXX ±0.1 UNIT: mm DO NOT SCALE DRAWING		MATERIAL	WEIGHT	CHECK	USED ON	iBLD42NR-60-H-S	
			SHEET	STANDARDIZATION	DWG NO.		REV A
		FIRST ANGLE PROJECTION	SCALE	APPD	FULLING MOTOR		
			1:1				

正弦波驱动