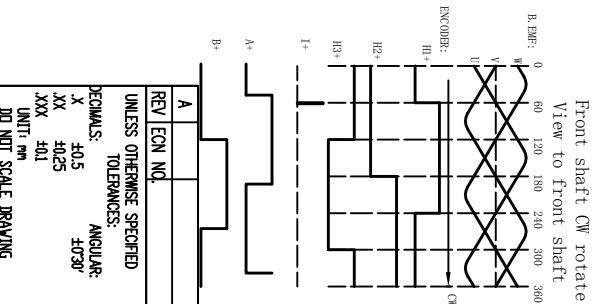


NUMBER OF PHASE	極數	3	Socket for phase			
NUMBER OF POLES	極	10	PHASE U	PHASE V	PHASE W	PE
LINE TO LINE RESISTANCE	線線	0.36±10% ohms@20°C	PIN A	PIN B	PIN C	PIN D
LINE TO LINE INDUCTANCE	線線	5.6±20% mH@1kHz	Feedback Info			
NOMINAL VOLTAGE	額定電壓	220 VAC	Feed back device			
NO LOAD SPEED	空轉轉速	5000±10% RPM	2500p/rev Incremental encoder			
NO LOAD CURRENT	空轉電流	0.8 A	PERMISSIBLE RADIAL+AXIAL FORCE			
RATED TORQUE	額定轉矩	4.77N.m	FR			
RATED SPEED	額定轉速	3000 RPM	SPRING WASHER			
RATED CURRENT	額定電流	7.6A	Fa			
PEAK TORQUE	峰值轉矩	14.3N.m	FR			
PEAK CURRENT	峰值電流	22.8A	BEARING			
BACK EMF CONSTANT	反電勢常數	38.1 Vrms/krpm				
TORQUE CONSTANT	轉矩常數	0.63N.m/A	AXIAL-FORCE			
INSULATION CLASS	絕緣等級	B 130°C	軸向力 Fa= 315N Max.			
DIELECTRIC STRENG	介電強度	1800VAC 1SEC	DISTANCE			
INSULATION RESIST	絕緣電阻	100MΩhm @500VDC	RADIAL-FORCE			
ROTOR INERTIA	轉子轉動慣量	3.1Kg.cm <sup>2</sup>	軸向力 Fr= 630N Max.			
WEIGHT	重量	5kg	SHAFT RADIAL PLAY			
OPERATION AMBIENT	使用環境	Ambient temperature:-20...+50°C,humidity Max. 85%(No condensation)	軸向隙 0.02mm Max. @4N			
STORAGE AMBIENT	存放環境	Ambient temperature:-20...+85°C,humidity Max. 85%(No condensation)	SHAFT AXIAL PLAY			
			軸向隙 0.08mm Max. @4N			



REV	ECN NO.	DESCRIPTION	MATERIAL	CONTR.	CHECK	DATE	P/N.
A		UNLESS OTHERWISE SPECIFIED				21/04/26	
TOLERANCES:		FIRST ANGLE PROJECTION		SCALE		SHEET OF	
DECIMALS:	ANGULAR:	CHECK		TITLE		SPECIFICATION	
X 40.5	±0.30°	APPD		USED ON		FL110SV150-220V-30EA1	
XXX ±0.1		DWG NO.		REV		A	
UNIT: mm		DRAWING		DRAWING		DRAWING	
DD NOT SCALE DRAWING		DRAWING		DRAWING		DRAWING	

FULLING MOTOR