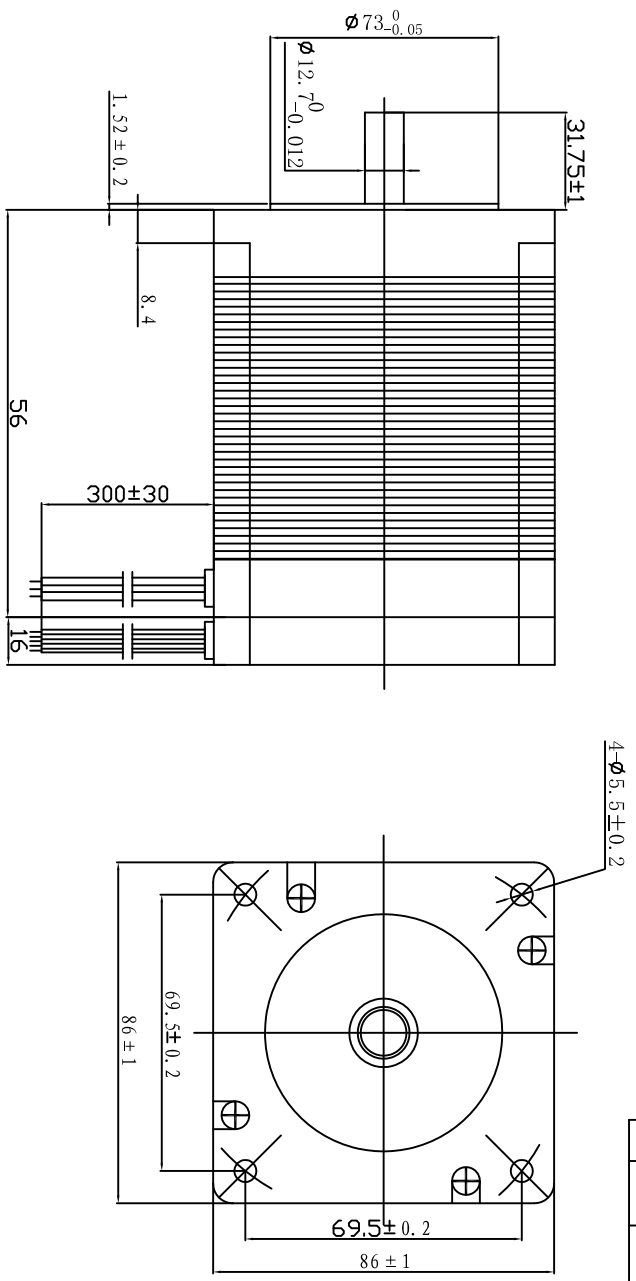
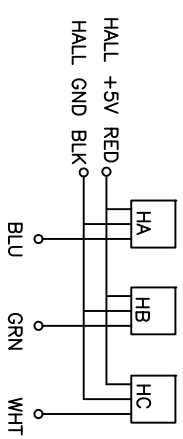
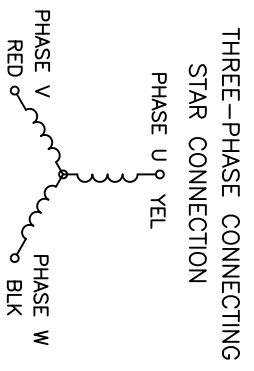
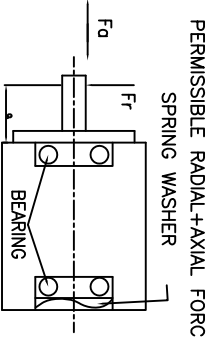


REV	ECN NO.	DESCRIPTION



NUMBER OF PHASE	绕组相数	3	Wires for Phases UL1332 AWG18
NUMBER OF POLES	极数	8	PHASE U YEL PHASE V RED PHASE W BLK
LINE TO LINE RESISTANCE	线电阻	0.9±10% ohms@20°C	YEL
LINE TO LINE INDUCTANCE	线电感	2.6±20% mH@1kHz	Wires for Hall UL1332 AWG22
NOMINAL VOLTAGE	额定电压	48 VDC	HALL V _{CC} HLU HV HW HALL Gnd
NO LOAD SPEED	空载转速	3500 RPM	RED BLU GRN WHT BLK
NO LOAD CURRENT	空载电流	0.55 A	PERMISSIBLE RADIAL+AXIAL FORCE
RATED TORQUE	额定转矩	0.35 N.m	SPRING WASHER
RATED SPEED	额定转速	3000 RPM	
RATED CURRENT	额定电流	3 A	
PEAK TORQUE	峰值转矩	1.05 N.m	
PEAK CURRENT	峰值电流	9.5 A	
BACK EMF CONSTANT	反电势常数	8.6 Vrms/KRPM	
TORQUE CONSTANT	转矩常数	0.116 N.m/A	
INSULATION CLASS	绝缘等级	B 130°C	AXIAL-FORCE 径向压力 Fo=220 N Max.
DIELECTRIC STRENGTH	介电强度	600VAC 1SEC	DISTANCE 距离 q=20 mm
INSULATION RESISTANCE	绝缘电阻	100MΩhm @500VDC	RADIAL-FORCE 轴向压力 Fr=60 N Max.
ROTOR INERTIA	转子转动惯量	400 g·cm ²	SHAFT RADIAL PLAY 轴向间隙 0.08mm Max. @450g
WEIGHT	重量	1.6 Kg	SHAFT AXIAL PLAY 轴向间隙 0.08mm Max. @450g
OPERATION AMBIENT	使用环境	Ambient temperature:-20...+55°C, humidity Max. 85%(No condensation)	
STORAGE AMBIENT	存储环境	Ambient temperature:-10...+35°C, humidity Max. 85%(No condensation)	



UNLESS OTHERWISE SPECIFIED		DESIGN	DATE	P/N
TOLERANCES		CHECK		3.1.02.XXX.XXXX
DECIMALS:	ANGULAR:	APPD		Specifications
.X ±0.5	±0.30°			FL86BL558
.XX ±0.25				REV
.XXX ±0.1				A
UNIT: mm	SCALE N.T.S	SHEET 1	OF 1	FULLING MOTOR
DO NOT SCALE DRAWING	FIRST ANGLE PROJECTION			