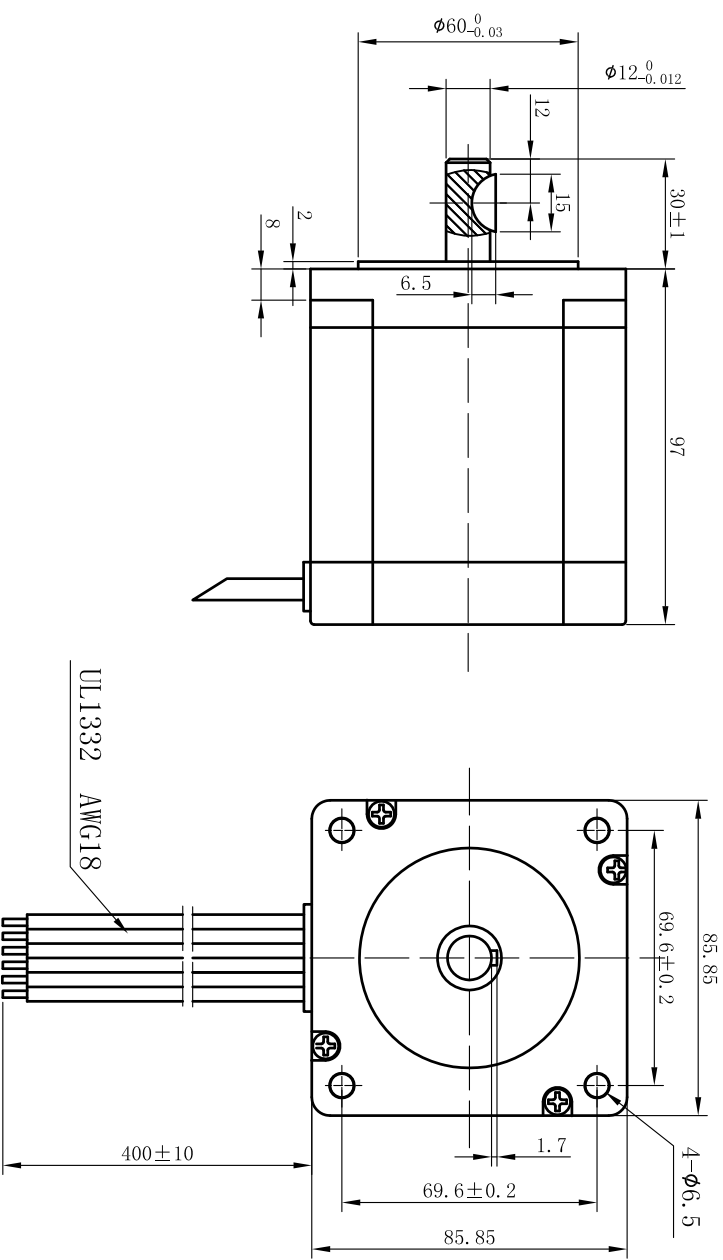
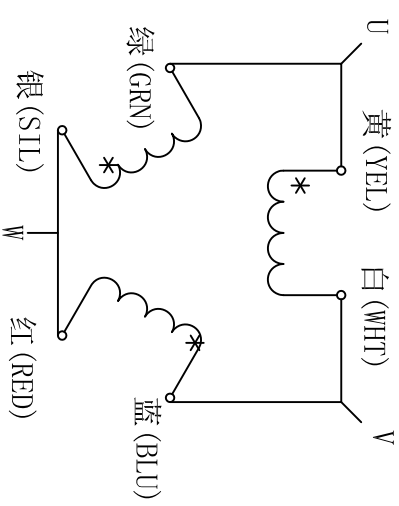


REV	ECN NO.	DESCRIPTION	DRN	APP'D	DATE

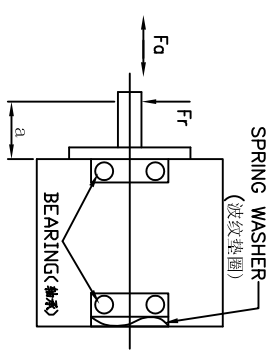
接线图 (Wiring Diagram)



SPECIFICATION

STEP ANGLE	步距角	1.2°/full step(步距)
STEP ANGLE ACCURACY	步距角精度	±5%
NUMBER OF PHASE	绕组相数	3
RATED VOLTAGE	额定电压	5.6 VDC
RATED CURRENT	额定电流	5.8 A
RESISTANCE/PHASE	每相电阻	0.97±10% ohms@20°C
INDUCTANCE/PHASE	每相电感	23±20% mH@1KHz
HOLDING TORQUE	保持转矩	4.52 N.m
PULL OUT TORQUE	运行转矩	N.cm@ RPM
BACK EMF	反电势	V @300RPM
DETENT TORQUE	定位转矩	0.15 N.m
ROTOR INERTIA	转子转动惯量	2200 g.cm ²
WEIGHT	重量	2.7 Kg
TEMPERATURE RISE	温升	Less than 80K(ΔT@80%)
SOURCE VOLTAGE	驱动器电压	N/A
INSULATION CLASS	绝缘等级	B 130°C
DIELECTRIC STRENGTH	介电强度	1200VAC/1S
INSULATION RESISTANCE	绝缘电阻	100MΩhm @500VDC
IP CODE	防护等级	30
OPERATION AMBIENT	使用环境	Ambient temperature:-20...+50°C,humidity Max. 85%(No condensation)
STORAGE AMBIENT	存储环境	Ambient temperature:-20...+85°C,humidity Max. 85%(No condensation)

PERMISSIBLE RADIAL+AXIAL FORCE
(允许轴向外力和轴向力)



UNLESS OTHERWISE SPECIFIED TOLERANCES:	ANGULAR:	FIRST ANGLE PROJECTION	DESIGN	DATE	P/N
.x ±0.5	±0°30'	FIRST ANGLE PROJECTION			3.1.01.086.XXXX
.xx ±0.25					Specifications
.xxx ±0.1			CHECK		USED ON
DO NOT SCALE DRAWING			APPD		FL863P97-02AW
			SCALE	1:2	DWG NO.
			SHEET	OF	REV
					A

PULLING MOTOR